



Quickstart

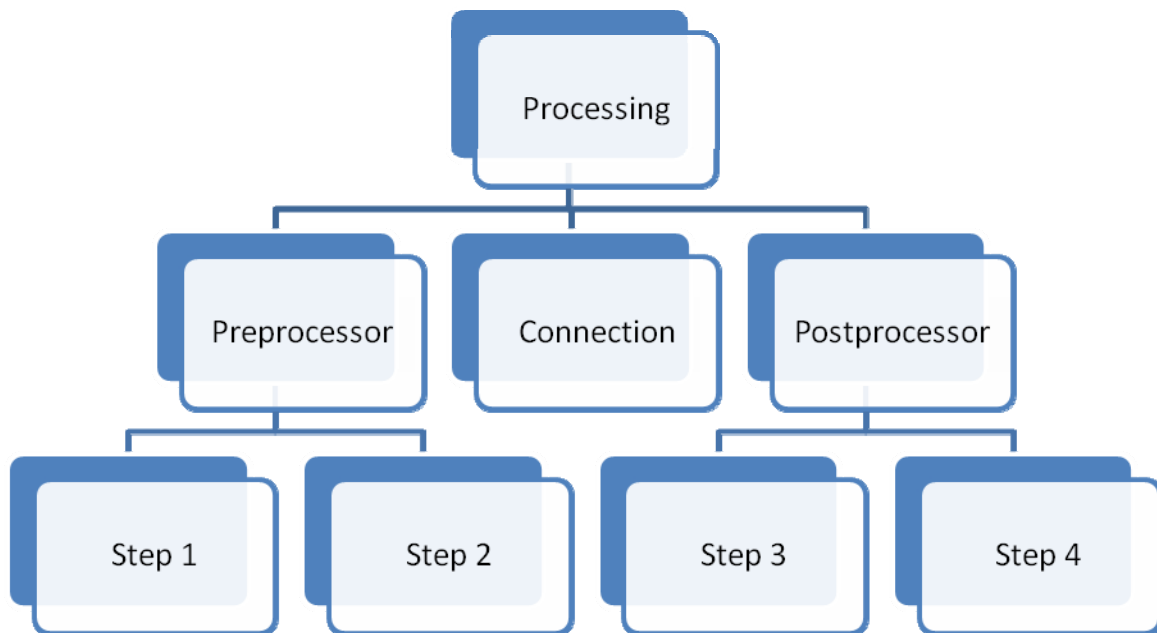
Sending and receiving data

Contents

- Overview 3
 - Starting eXite®_link..... 3
- Sending Data 4
 - Creating the Connection 4
 - Creating the Preprocessor..... 6
 - Creating the Processing 10
 - Executing the Processing 11
- Receiving Data 12
 - Creating the Connection 12
 - Creating the Postprocessor 14
 - Creating the Processing 17
 - Executing the Processing 18

Overview

A *Processing* is used to accomplish one communication task with eXite. What exactly it does is defined by its components, which are one preprocessor (optional), a connection and a postprocessor (optional).



When running a processing, first its preprocessor is executed, the connection is established and the associated task is carried out and then the postprocessor is executed.

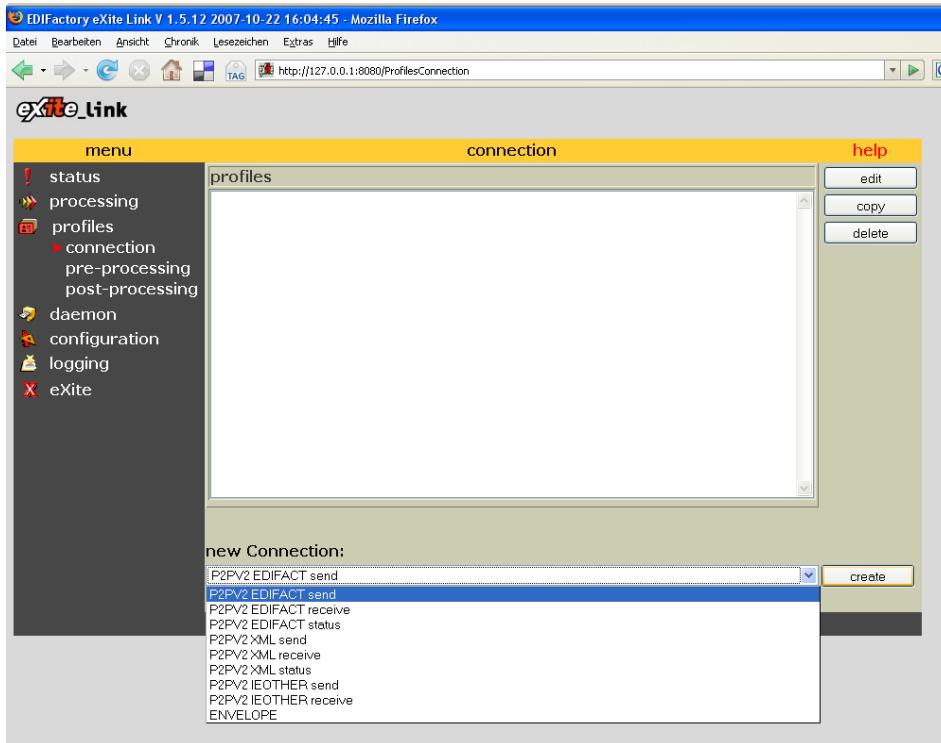
Starting eXite®_link

When starting eXite®_link, a console window pops up to which output is logged. As long as it stays open, eXite®_link is running.

To get to the web interface for managing your configuration, navigate your browser to <http://127.0.0.1:8080/>.

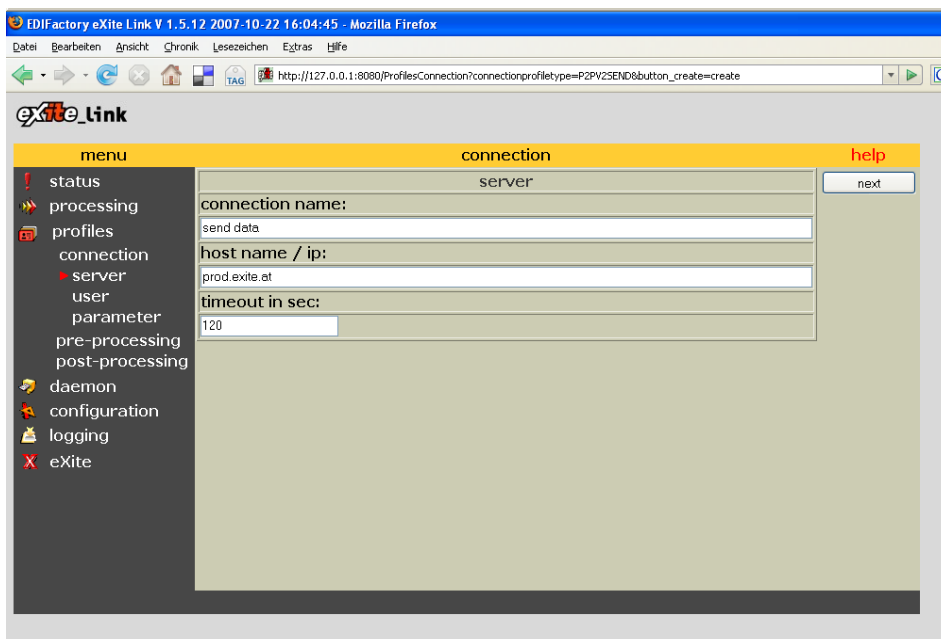
Sending Data

Creating the Connection



We start off by creating a connection profile for sending Edifact data.

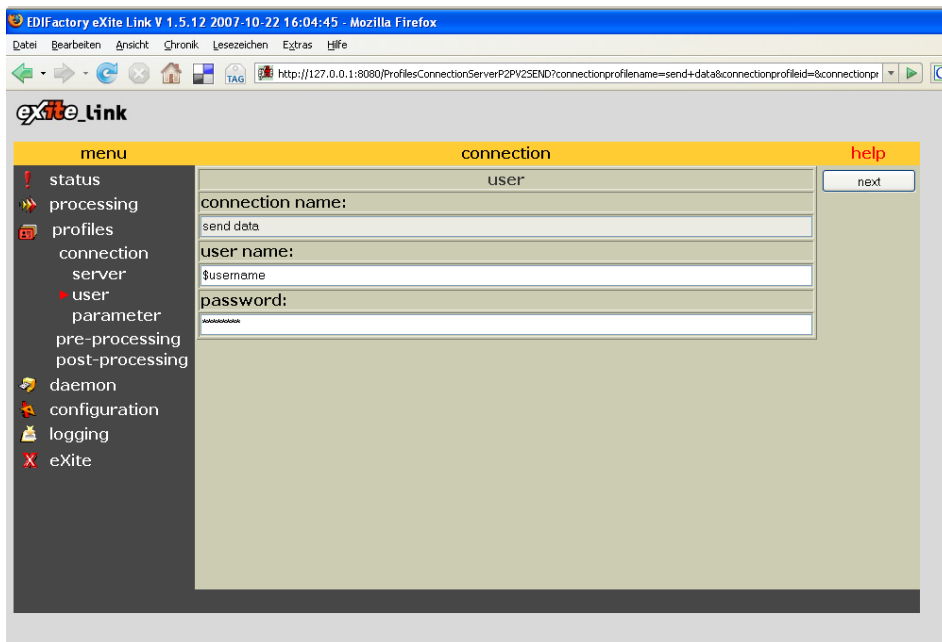
Click on *profiles*, select *P2PV2 EDIFACT send* from the drop down list at the bottom and click *create*.



On the next page you name the connection profile. In this case we chose the name *send data*.

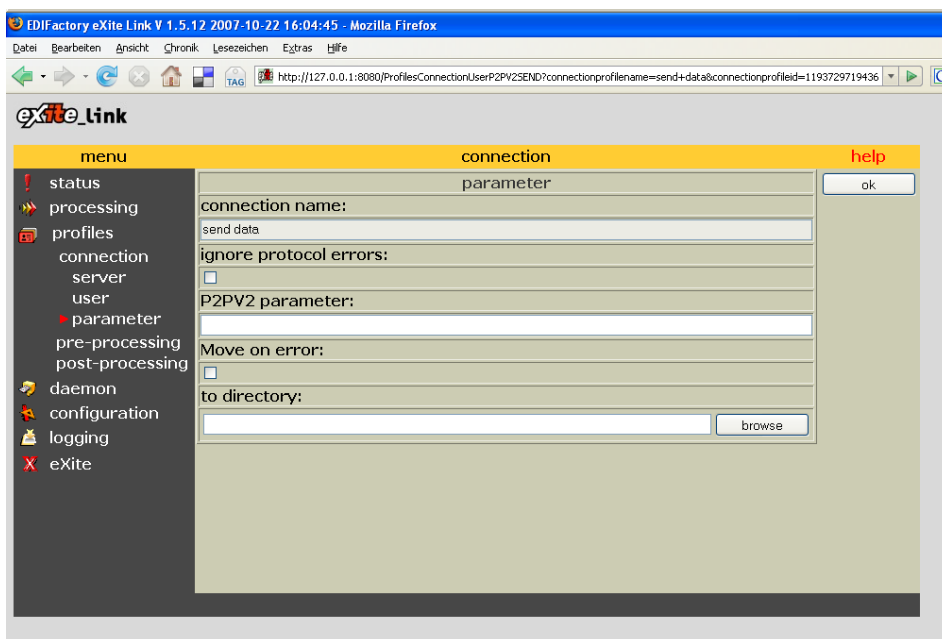
The hostname for our production server is *prod.exite.at*, for the test server it's *test.exite.at*

Click on *next* to go to the next page.



On the following page enter your *username* and *password* to authenticate you at the eXite service.

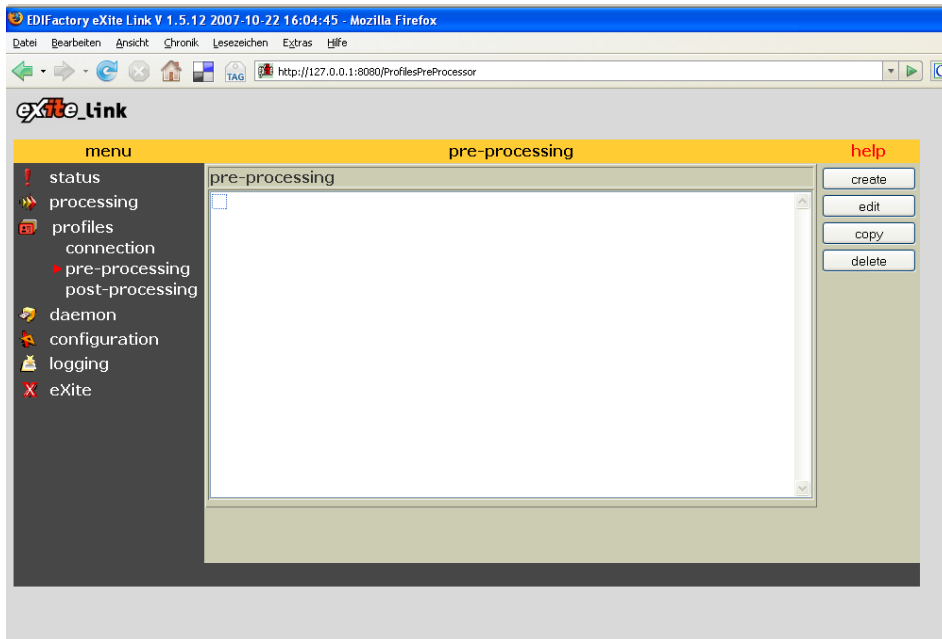
Click *next* to get to the following page.



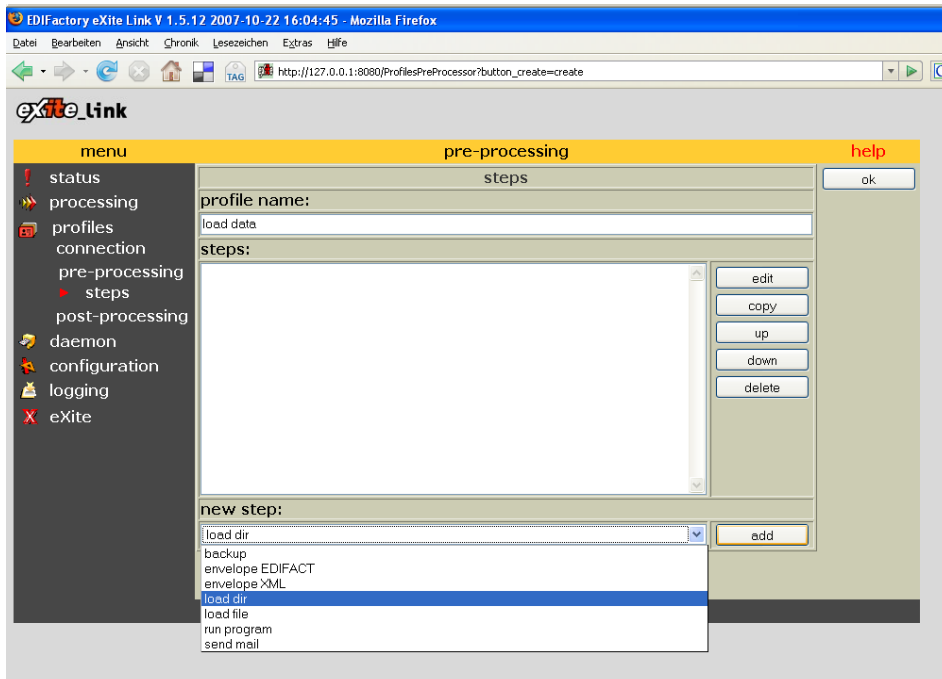
On the next page you can chose to move files for sending to another folder in the case of an error.

Click *ok* to finish creating the connection profile.

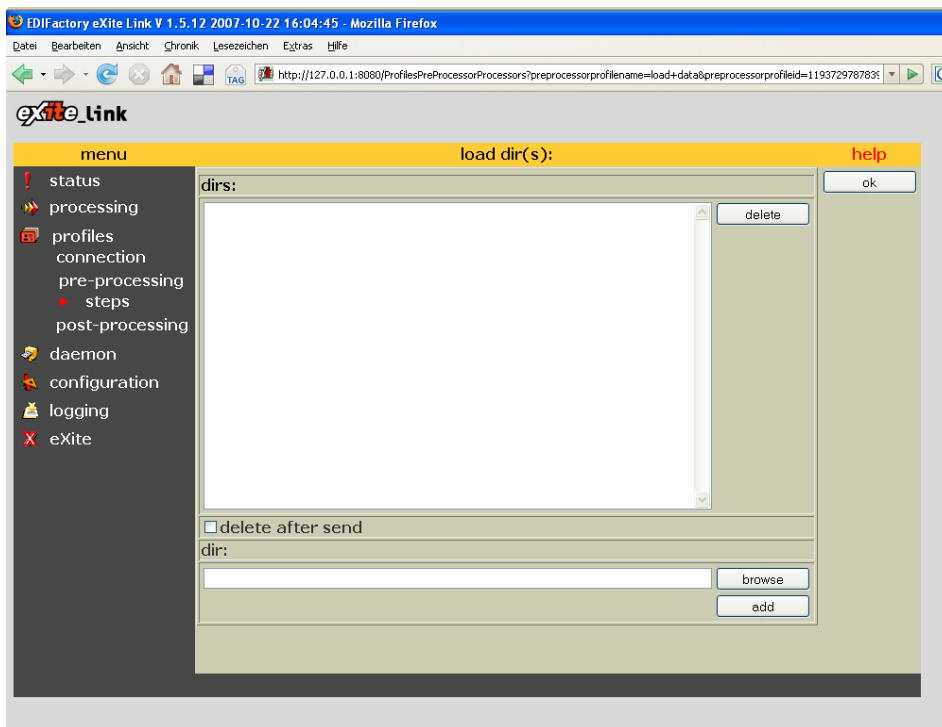
Creating the Preprocessor



Next we are going to *create* a pre-processing profile, which we use to specify and prepare the files which we want to send.

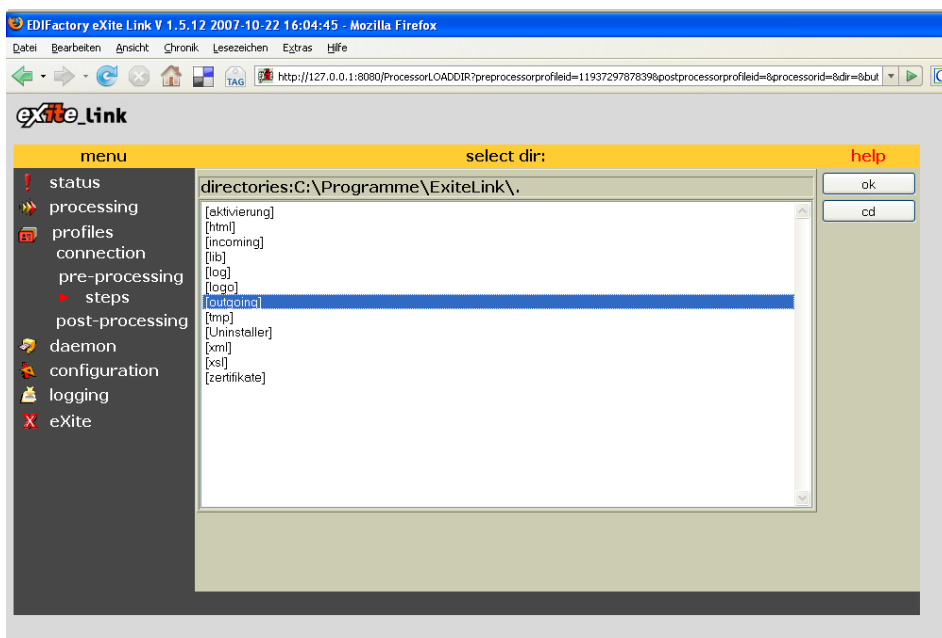


First we name the preprocessor and add a *load dir* step, by selecting the correct entry and clicking *add*.



On to following page click *browse* to select the directory from which the files should be loaded.

You should also choose to *delete files after send*, so you don't try to send them multiple times. This setting doesn't affect files in the case of an error.

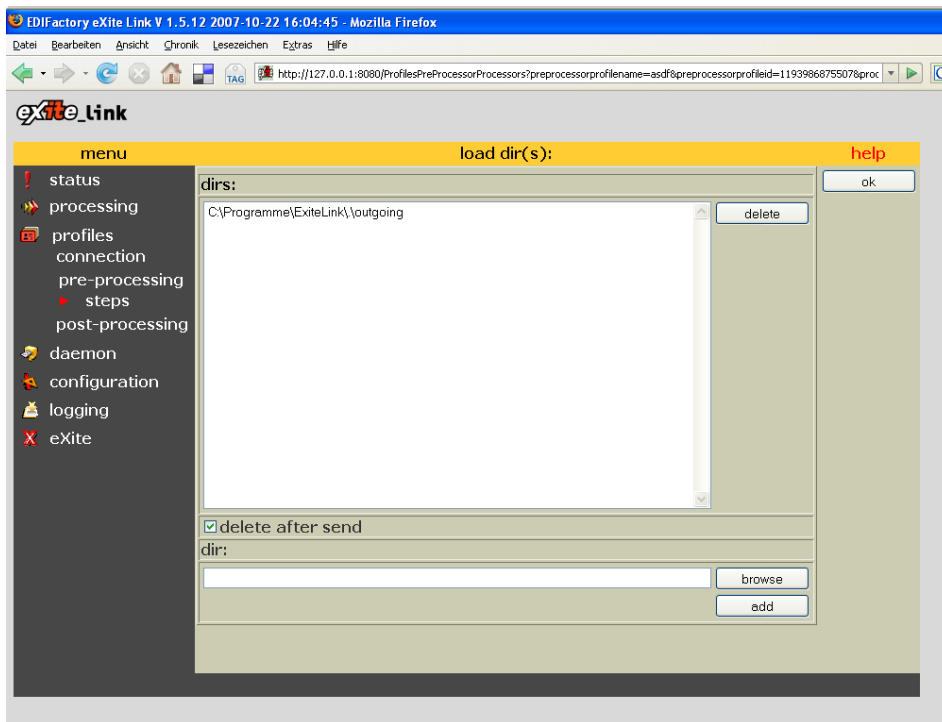


You'll have to create a directory for storing files that should be sent (in this example called outgoing). This will be the directory in which eXite®_link will expect the files, so you or your application, respectively will have to place the files there.

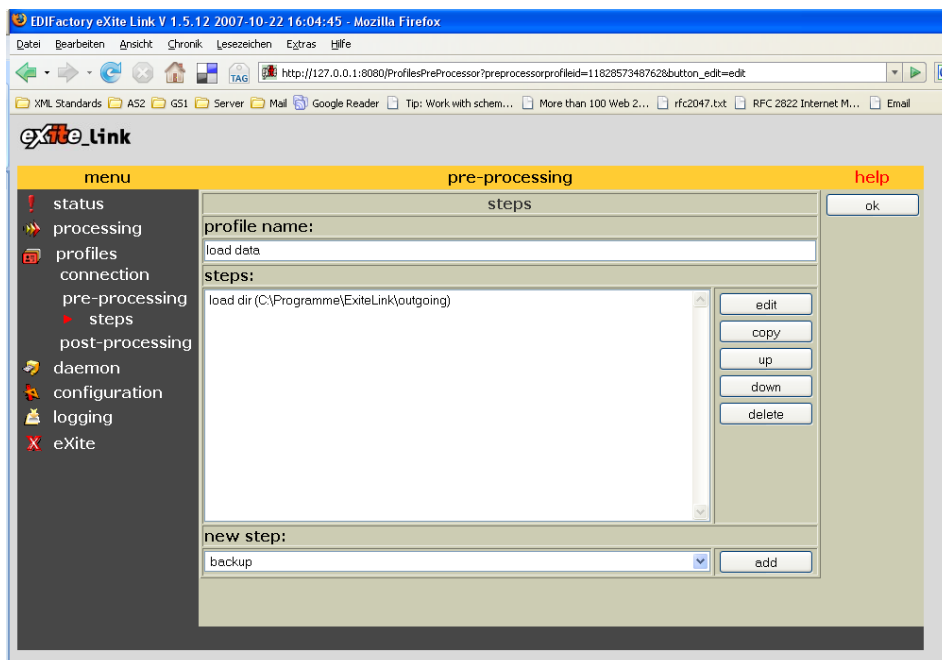
Use to *cd* button to

enter a directory and the *ok* button to finally select the desired directory

If you want to select a directory outside of the eXite®_link directory, please refer to the handbook on how to change the root directory.



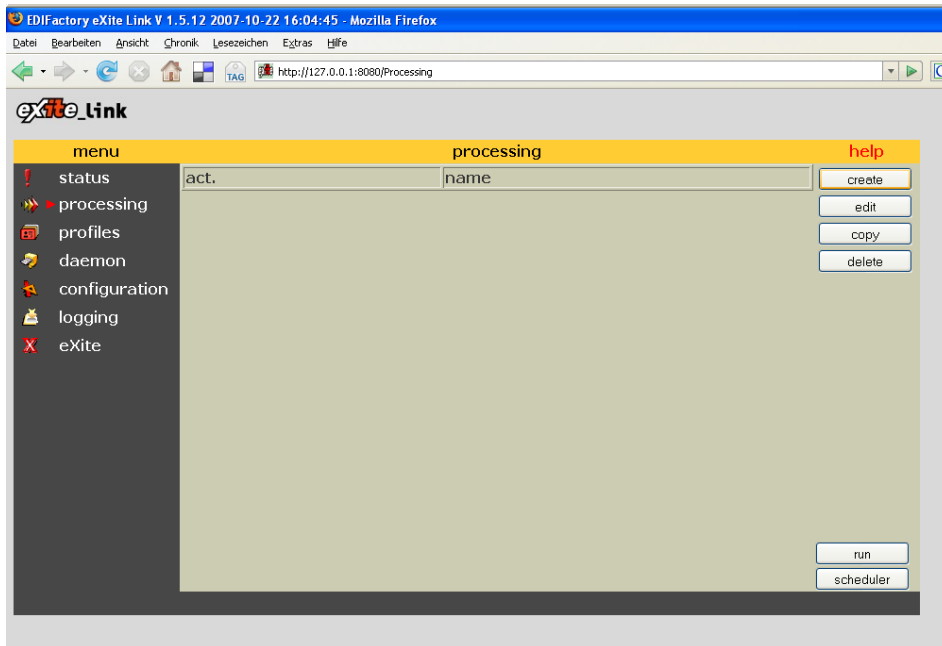
After you've clicked ok on the last page, you can add further directories to load files from. In this example we don't want more directories so we just click *ok* again.



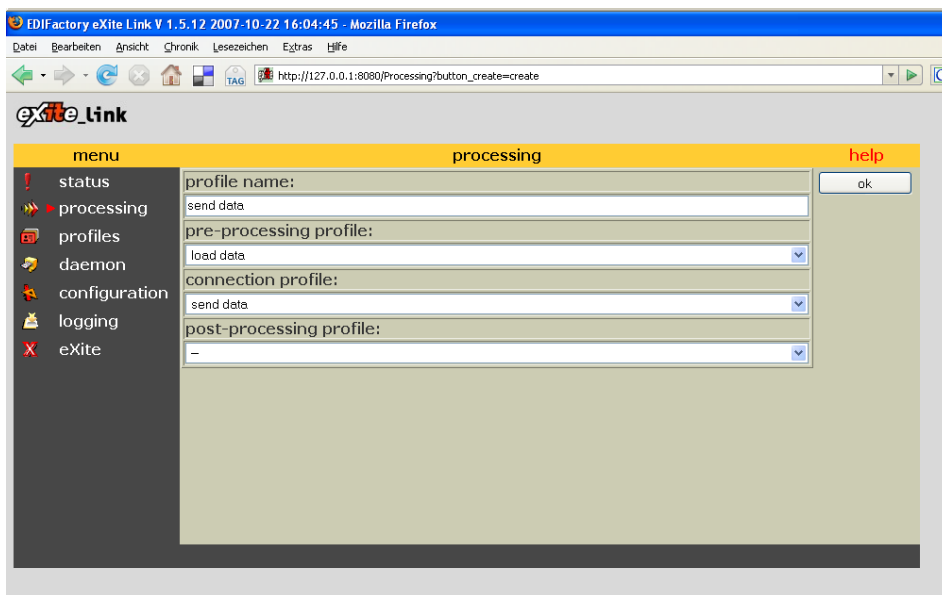
After you've clicked ok you are again taken to the preprocessor page where you could add further steps. For this example we are finished now, so click *ok*.

We do not generally need a postprocessor for sending files, so we can go on with creating the processing.

Creating the Processing



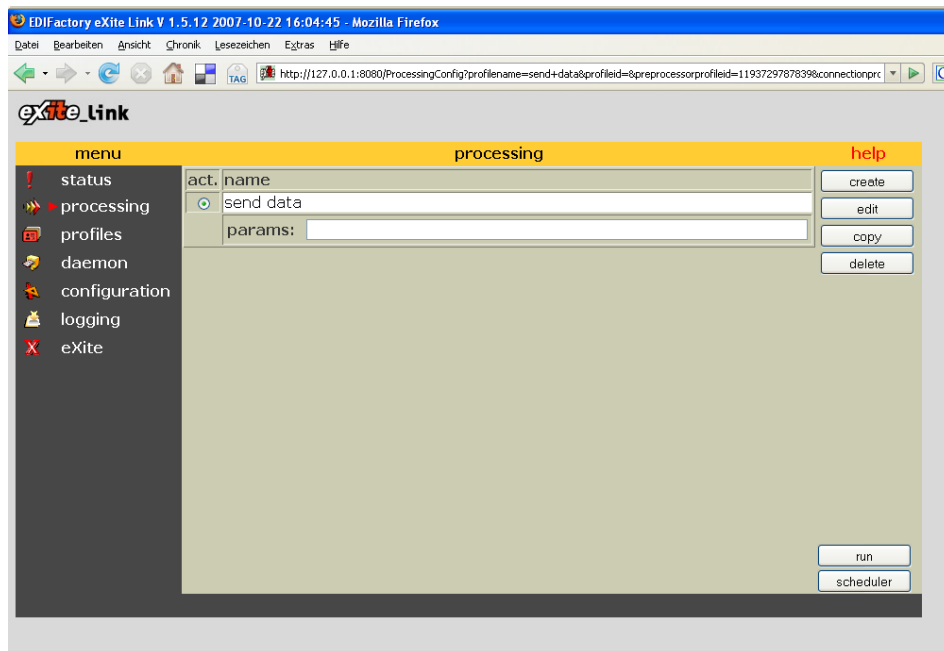
Click on the menu item *processing* and then chose to *create* a new one.



First enter a name. Then select the preprocessor and connection profile we've created just before.

Click *ok* when you are finished.

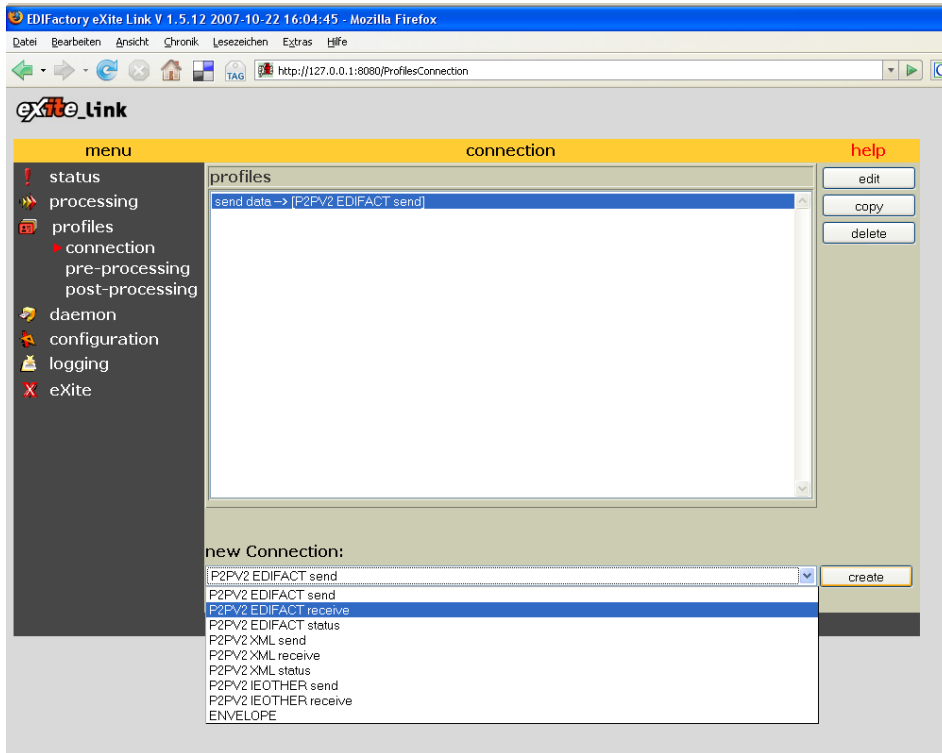
Executing the Processing



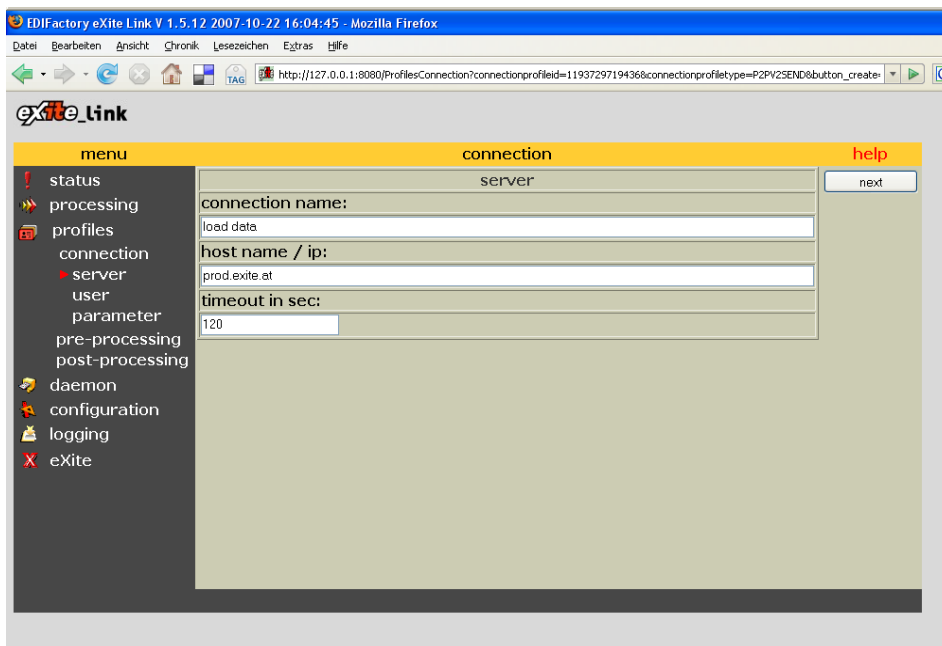
You are again taken to the processings page, where you can click *run* to start the selected procedure. You can see the progress and possible error messages on the status page which is accessible through the menu.

Receiving Data

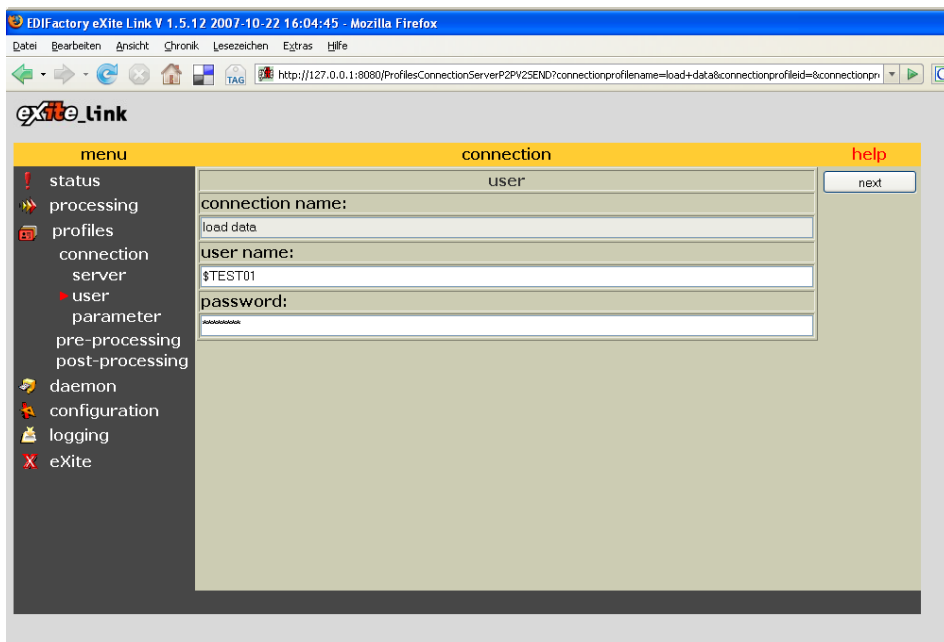
Creating the Connection



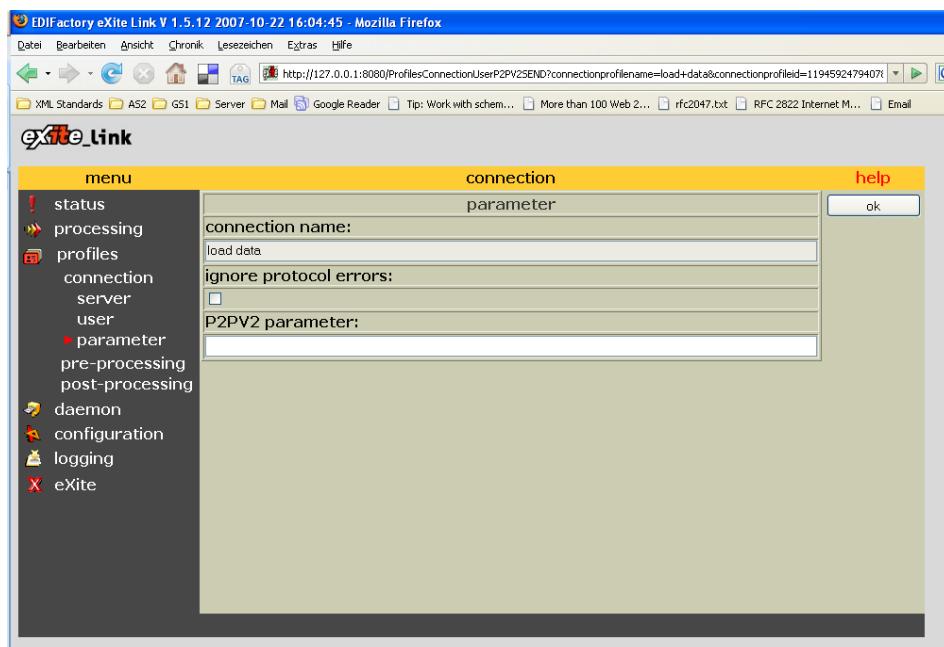
We start off with a connection profile: Select *P2PV2 EDIFACT receive* from the list and click on *create*.



On the following screen enter a *name* for the connection, the *hostname* (which is *prod.exite.at* for the production system and *test.exite.at* for the test system) and click *next*.

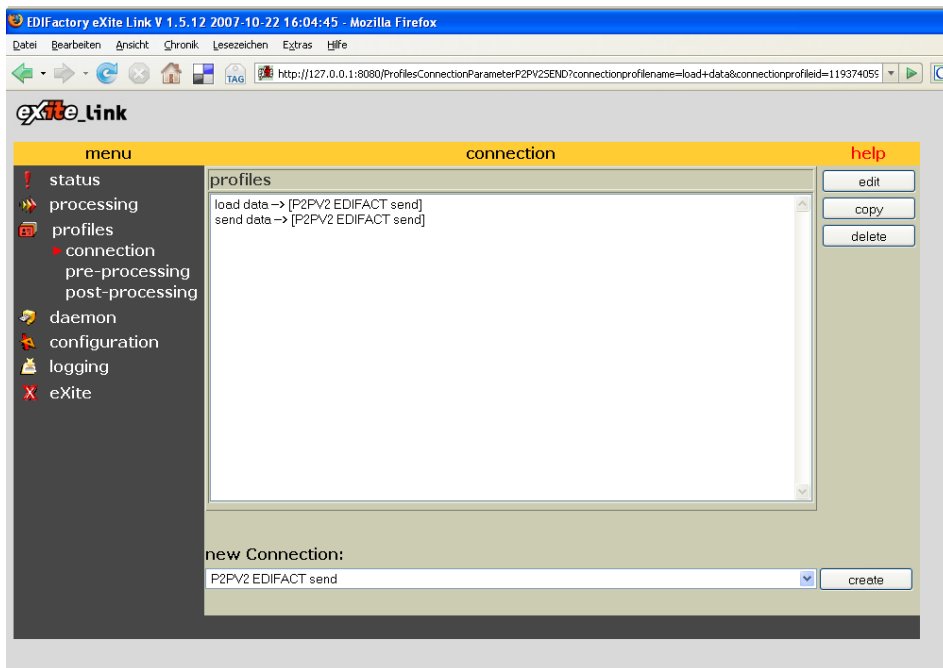


Then enter your *username* and the corresponding *password* for authentication at eXite and click *next*.



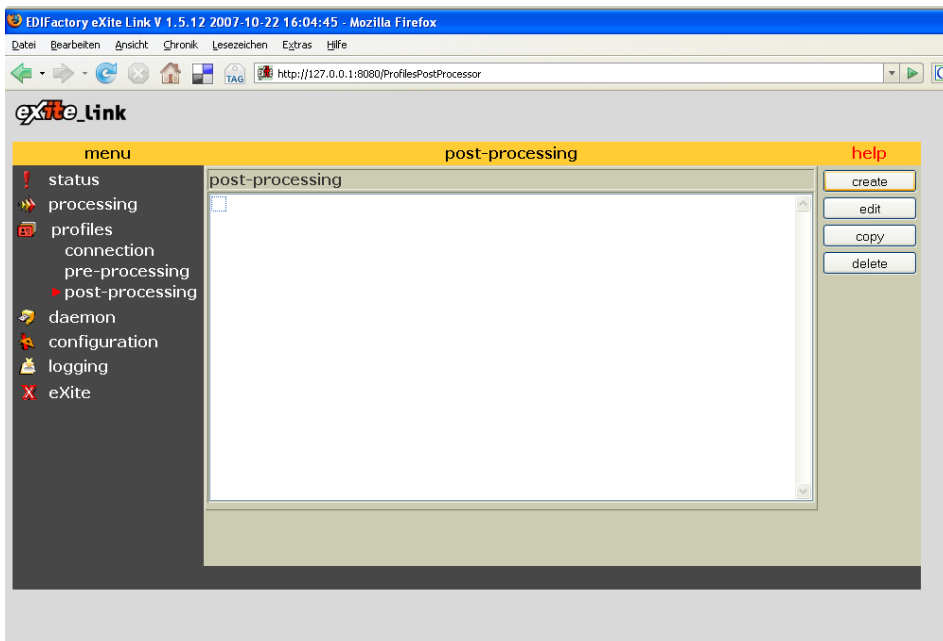
The following page contains settings which are used for more advanced configurations. Please refer to the manual for a detailed description.

In this example we continue by clicking *ok*.

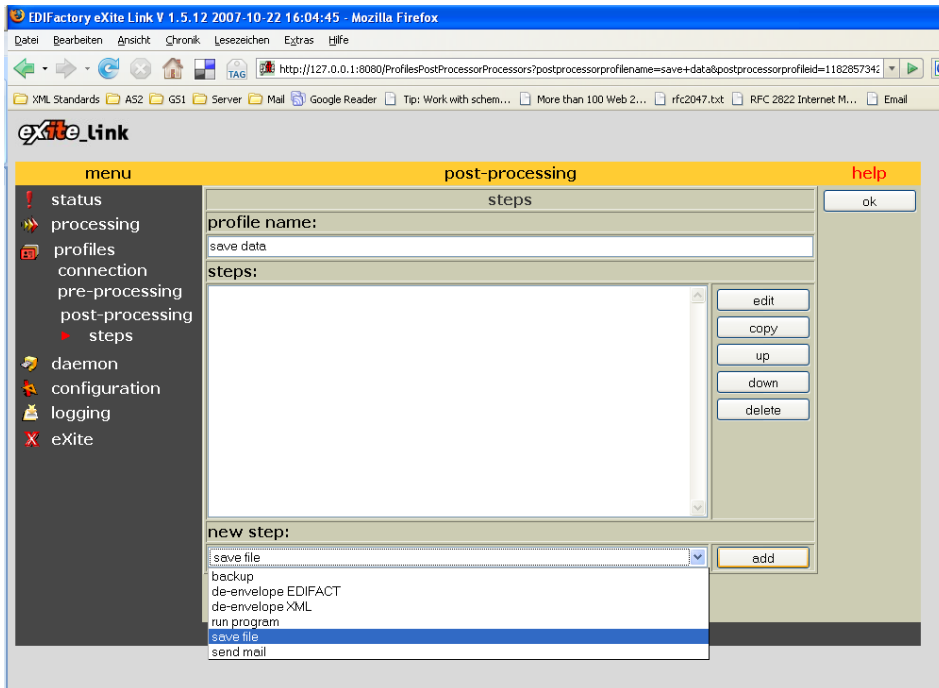


You are taken back to the connection-page where you see the newly created connection and the one from the first example.

Creating the Postprocessor

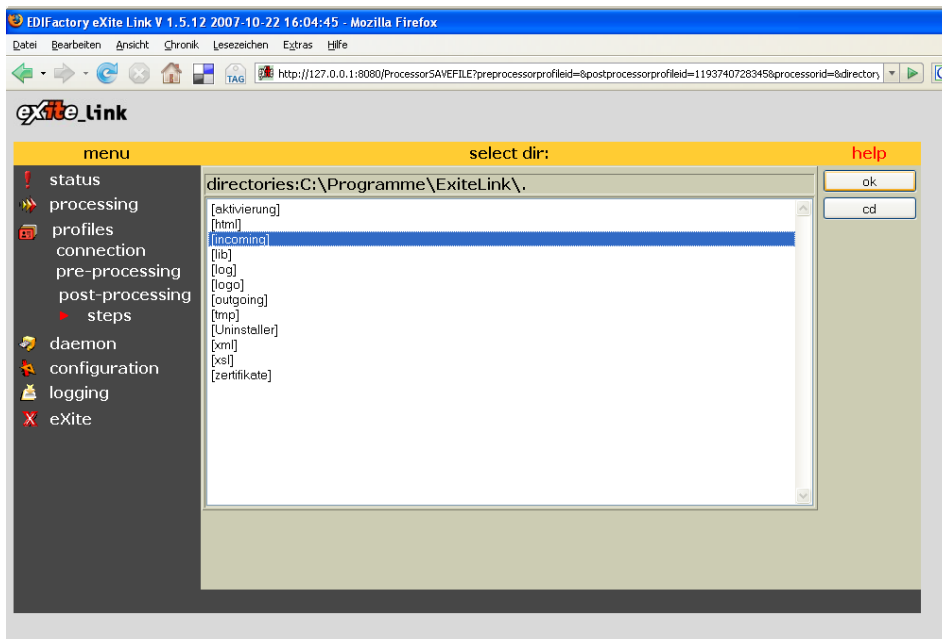


Click on *post-processing* to proceed.



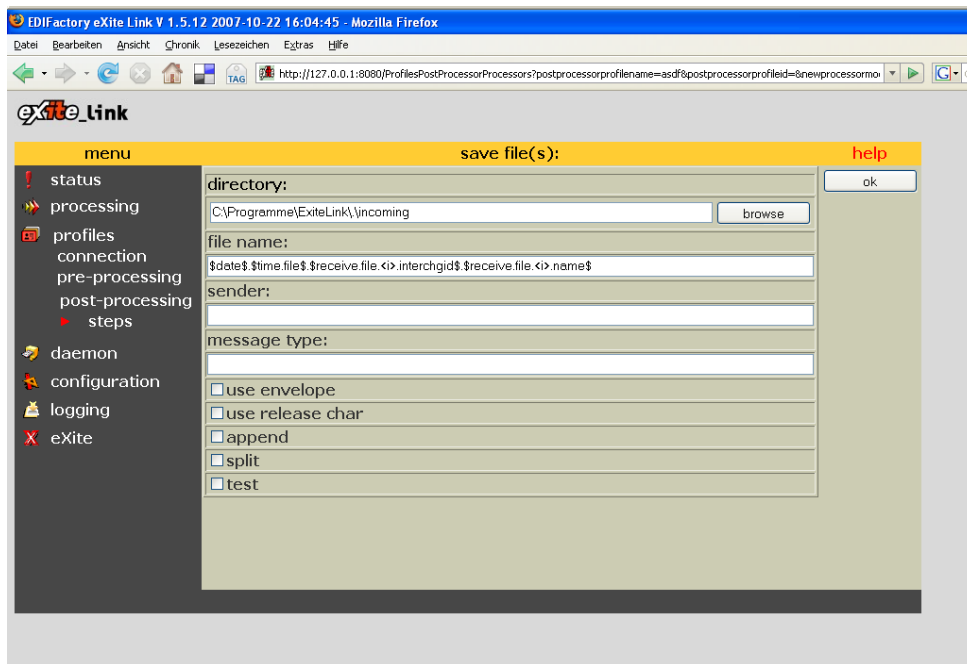
At first name the postprocessor. Then add the first step, which will save the received files.

Select *save file* from the list and click *add*.



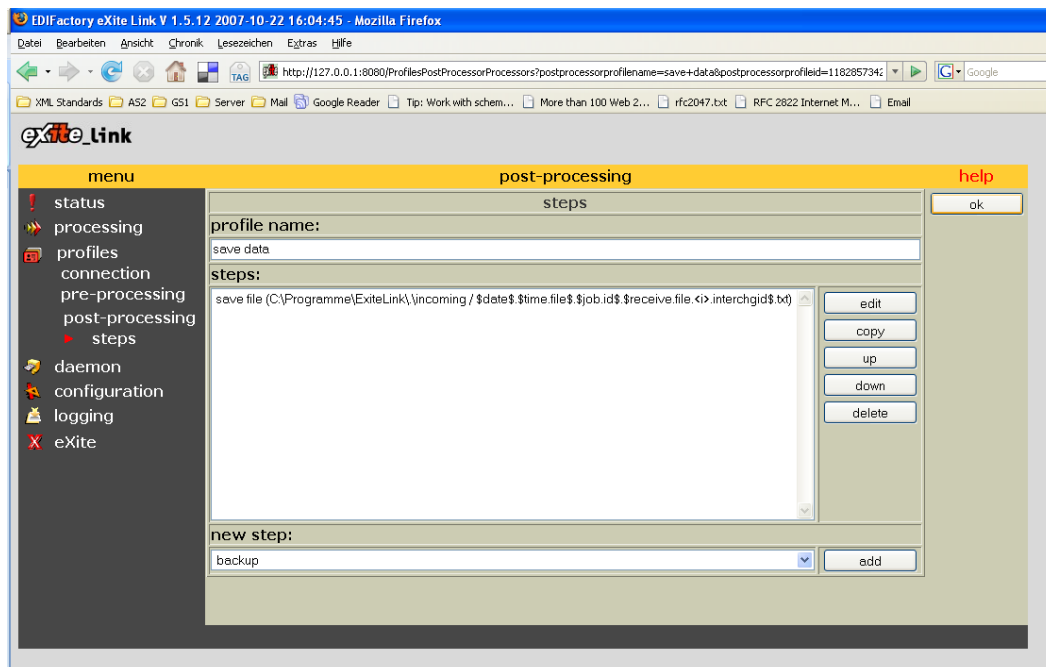
On the following page click *browse* and select the directory to save the received files in.

Use the *cd* button to switch into a directory and the *ok* button the finally select one.



Enter the name of the files that are saved. You can use various variable names. Please refer to the eXite®_link manual¹, chapter 8.3 for a detailed description.

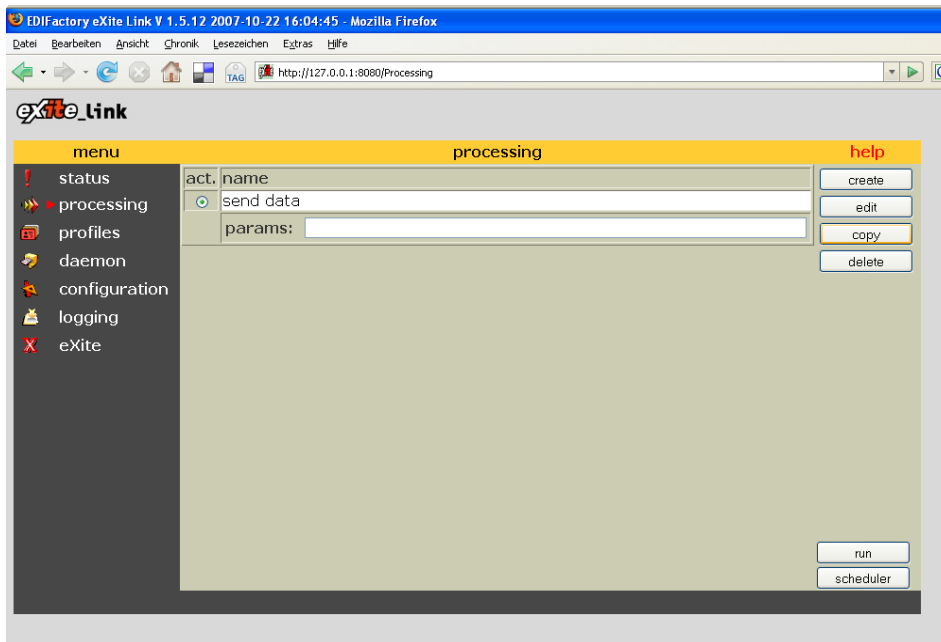
Click ok when you are finished.



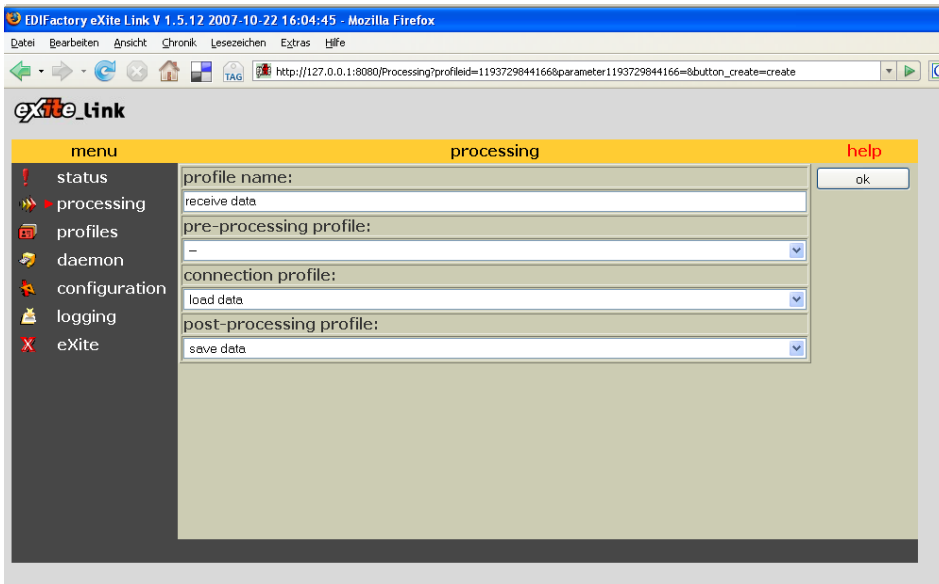
You are taken back to the post-processor screen where you could add further steps. Since we have the desired steps, we click *ok*.

¹ <http://www.exite-info.at/exitelink-manual>

Creating the Processing

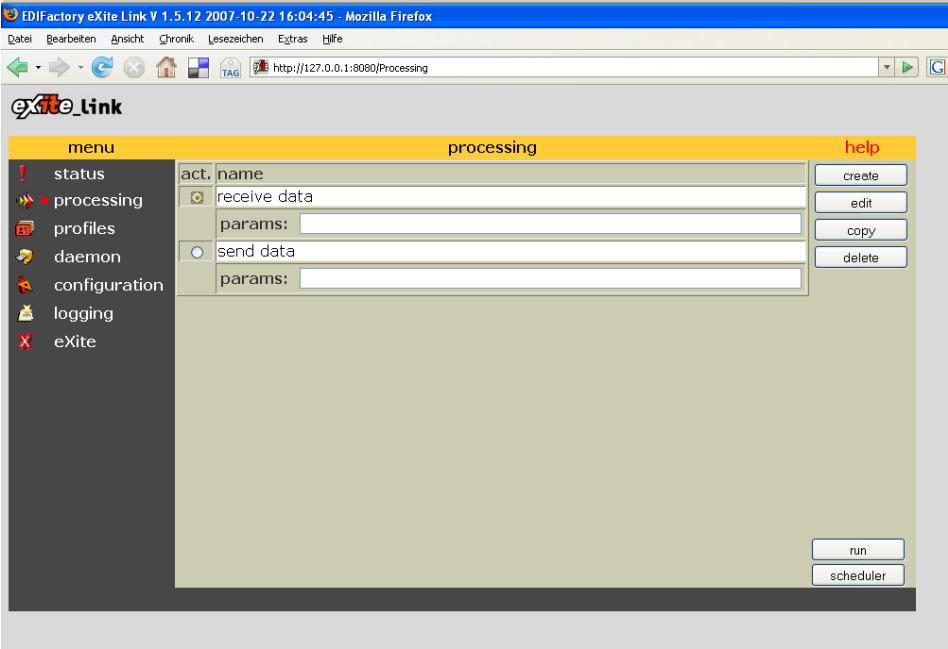


As we have finished the connection and postprocessor and do not need a preprocessor, we can create the processing now. Go to the *processings* page via the navigation and click *create*.



Enter a name for the processing and select the connection and postprocessor. Then click *ok*.

Executing the Processing



You are back at the processings page where you can select the checkbox beside the processing and click *run* to activate the start the procedure.